

*The*

# LAKE BASIN JEWEL

*1st Issue Sep. 2009*



**TOURISM AND CULTURAL DEVELOPMENT  
OF THE NILE BASIN MAGAZINE**

## EDITORIAL BOARD

CHAIRPERSON	:	Ms Judy Miriga (USA).
PUBLISHER/EDITOR	:	Akech Obat Masira (Kenya).
PRODUCTION MANAGER	:	Jimmy Oloo (Canada).
EUROPE CIRCULATION MANAGER	:	William Oduor (Denmark).
AFRICA MARKETING MANAGER	:	Padwa Daniel (Sudan).
GUEST EDITOR	:	John Midega (Kenya).
CIRCULATION MANAGER (E.A.)	:	Joseph Olita.
EDITORIAL ASSISTANT	:	Omar Nasser. (Kenya).
ADVERTISING MANAGER	:	Ms Betty Ongata. (Kenya)
ASSISTANT ADVERTISING MANAGER	:	Ms Lynett Yogo.(Kenya)
LAYOUT AND DESIGNER	:	Dominic Omondi (Kenya).
PHOTOGRAPHER	:	James Marua (Kenya)

### CONTRIBUTORS:

DR. JGC AMOLLO

DEPARTMENT OF TOURISM

PROF. JALLANGO AKELLO (Masinde Muliro University)

PROF. CHARLES NYAKITI (Kenyatta University).

JACOB ODHIAMBO (Former fisheries Officer)

PROF. C.J. ODHIAMBO (Moi University)

Write to:

### **The M.T PROMOTIONS**

P.O BOX 6111 KISUMU KENYA.

TEL NO: +254726164954

EMAIL:obatmasira@yahoo.com

Website://htt.www.misangoarts.blogspot.com

**Reproduction of material is not allowed.**

***The Lake Basin Jewel reserves the right to edit materials for clarity and brevity to suit the style the design.***



Publisher /Editor

Welcome, everybody, to this first edition of The Lake Basin Jewel Magazine, a magazine that hopes to celebrate the tremendous tourist potential of the Lake Basin region. This is the first of a series of such magazines which are geared towards promoting and sensitizing society on touristic issues within and around the region. This issue has its theme as “Tourism and Cultural Regional Development.” This magazine, as one realizes, is a journey into some of the major touristic highlights in the Lake Victoria region. It focuses on the Lake Victoria basin and Western Kenya region. This region boasts of huge tourism potential in many ways.

Already, the Kisumu Tourist Office has been established in the region: 2006. The office was charged with the mandate of overseeing tourist related activities in both Nyanza and Western provinces. To this end, this magazine, along with other stakeholders, is a humble contribution to the core objectives of the same said office.

This region’s nucleus is Lake Victoria, around and within which obtains over fifty tourist attractions. Apart from a colourful mix of peoples and cultures, such attractions, both man-made and natural, include: Lake Nakuru, Lake Bogoria, The Rift Valley Escarpment, the Nandi Escarpment, the Koru caves, the Arap Samoei Museum, Kitale Museum, Kisumu Museum, Impala Park, Ndere Island, The Weeping Stone of Maragoli, Webuye Falls, Thim Lich Ohinga National Museum, Tom Mboya Memorial Museum, Ugwe Bay Ruins, Odino Falls, Kit Mikayi, Kakamega Forest, Yala River Delta and Mount Elgon National Park. Kogelo village in Siaya, indeed, is the ancestral home of the current president of the United States of America- a fact which adds flavour and value to the tourism development in the region. These are national heritage sites which are not a monopoly of any individual. All of us have the responsibility of conserving, protecting and promoting them.

The infra-structure in the region is well developed. These include the Eldoret International Airport, Kisumu Airport as well as Kisumu Harbour, all forming linkages with the Great Lakes Region and beyond. There are numerous academic and learning institutions in the region: these include Maseno University, Masinde Muliro University, Odera AKang’o Campus and Egerton University, Baraton University and Moi University. All these are stakeholders to the broad objectives of touristic and filming ventures in the region.

This region has not been adequately marketed, as expected, both locally, regionally and internationally. It is the intention of the magazine to bridge this gap. It is hoped that this magazine will be read far and wide. As is observed, the articles and photos in this edition are from a varied range of stakeholders and contributors. These articles and photos will act as opportunities to market film making locations in the region. By so doing this, we hope to make the region the “Basinwood” of Film making in Kenya. Mainly, also, the magazine hopes to increase awareness towards preserving our God-given, natural and other resources.

This quarterly magazine has its focus as, “The Promotion of Tourism, Cultures and Enterprises in the Nile Basin”. The second issue of this magazine is coming out in December, 2009. We are very grateful for all the contributions and support received, from all our well-wishers and friends, even as we encourage for more such contributions for subsequent issues. Ultimately, we hope that through such venture we should be able to realize, promote and sustain another Kenya’s Tourist Mecca, Nature’s Own Wonderland. Thank you and welcome to a refreshing read!

**By: Dr. JGC AMOLLO (DECEASED)  
FORMER CHAIRMAN, WESTERN KENYA TOURIST  
ASSOCIATION.**

**K**enya has for long been a world leader in Eco-tourism. Accordingly, the Kenya Government's stated policy is to conserve wildlife for posterity while giving due regard to human interest. This policy translated very well into encouraging self sustaining tourism that does not degrade the environment while at the same time reducing conflict between local communities and wildlife. It is not surprising therefore that Kenya is one of a few destinations that: give visitors a veritable spectacle of wildlife that is co-existing harmoniously with its human neighbors.

Wildlife in Kenya is not only precious natural heritage but it also makes Kenya the ultimate destination of unlimited adventure. Great names such as Sir. Winston Churchill, Theodore Roosevelt, Ernest Hemingway lived with lasting memories of land vivid contrasts, with open wide spaces, snow capped mountains on the Equator, vast rolling plains teeming with wildlife that was and still is awe inspiring and can not be rivalled anywhere else in the world. Their undying memories of this nature's wonderland still hold true today. The visits by the luminaries of yester years as well as Royalty have given the seal of approval of Kenyans claim as Nature's wonderland and the home of "Safari" which is a Kiswahili word meaning "journeys".

Ever since the arrival in Kenya of the Late American President, Theodore Roosevelt in 1909 on an expedition to collect natural history specimens for American Museums, world interests on Kenya as nature's wonderland was enhanced. By then, photography was not the objective of the safaris since big game hunting was the major pursuit. Today, bagging the big five or any other type of game is done by camera hunting was banned in 1978 in line with Kenya's Wildlife conservation and management policy. A well designed and efficient grid of infrastructure links the National parks and Game reserves with Nairobi and Mombasa. There are superb accommodation facilities in Kenya's game sanctuaries. Kenya's priceless treasury of wildlife owes it very its very existence to contrasts in the country's terrain, which ranges from rugged snow peak covered peaks of Mount Kenya, the highlands, the Savannah, Great Rift Valley and its Lakes as well as the summering sands of the coast. Each of these geographical regions is home to different types of wildlife that are unique to each area.



**GIRAFFE AT RUMA NATIONAL PARK**

For ornithologists, Kenya has an amazing wealth of birdlife. More than one thousand bird species have been recorded in vast variety of habitats in Kenya. This huge variety is due to lack of extreme variation in climate. Kenya also gets her share of migratory birds. It has been estimates that as many as six millions birds migrate to Kenya during the Northern Hemisphere winter. The combination of these migrants together with a thousand odd local species makes a Kenya a truly ornithological paradise.

Kenya has 59 National parks, Game reserves, Marine National parks and Reserve which account for approximately eleven percent(11%) of Kenya's surface area. Proper management of the game sanctuaries is the hall mark of the country's conservation measures and commitment to eco-tourism.

There are seven designated major tourist circuits as well as seven other minor circuits. Each circuit is made up of a number of National parks and Game Reserves and is home to wild life that is particular habitat.

## **PEOPLE CULTURE**

Kenya has colorful mixture of peoples as well as a cocktail of cultures. The current population of about thirty million is made up to cover forty ethnic groups.

However, the Nilotes, Bantus and Cushites form the bulk of the population. The minority, Asians, Arabs, and Europeans live mainly in urban centres. The ethnic diversity has produced a harmonious mixture of people with rich culture heritage.

The national language, Kiswahili is widely spoken by most Kenyan. English is the official language as such it is spoken at all levels. Besides English, French, German and Italian are also spoken in the tourist

Industry, The rich culture heritage and diversity of people is expressed through songs, dance, art and handicraft which are truly unique and embodied all the entrancement of exotic Africa. To listen to the music or watch various festival and ceremonies of any of the ethnic groups is a thrilling and unforgettable experience. Visitors are able to sample some of these ethnic festivities and ceremonies at Bomas of Kenya, one of the cultures centres which is only 8 KM from the commercial Centre of Nairobi.

## WESTERN KENYA TOURIST CIRCUIT

The city of Nairobi is also the main safari base for the Western Kenya Tourist circuit This circuit includes Mt. Longonot National parks, Lake Nakuru National Park, Ruma National Park, Ndere Island, Kisumu Impala Park and the world famous Maasai Mara Game Reserve. Transmara through Kisii Hills Ranges and Valley bottoms to Migori traversing huge sugar plantation with Awendo as factory site.

From Migori to Muhuru Bay with beautiful beaches comprising the famous Got Kwer, the origin and home of Legio Maria religious sect.

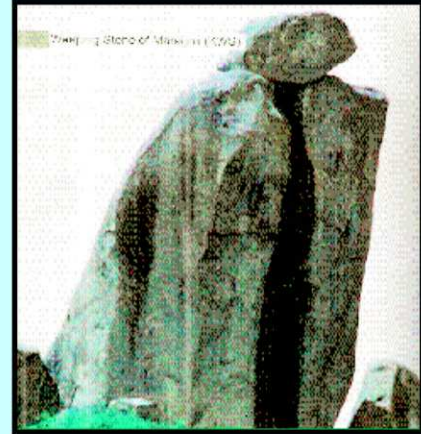
From here you visit the oldest goldmine in Nyanza Province at Macalder Mine and visit home of Williamson Goldmine then move on to the Karungu Bay with its rectangular site of the gulf. At Nyandiwa in Owasi the home of historical Nyamgondho wuod Ombare with animals and birds bests impressed on the stones along the Lake shores

Lambwe Valley (Now called Ruma National Park) provides a sight of its own with hill formation, swing of Kanyamwa escarpment and Kaksingiri, Gembe and Ruma Hills. A tourist resort at Magunga would be a viable proposition.

Mbita point and Rusinga Island contains the grave of the famous Joseph Mboya- flamboyant politician Kenya has ever produced. Deplorable still is the grave of the miraculous Gor Kogalo the old legendry.

Other interesting sites on this route include Simbi Nyaima, Nyabondo plateau, bird sanctuary in Kano Plains and a crocodile Farm near Homa Lime, the old and famous Kit Mikayi in Seme, Ndere Island animals sanctuary and Koru Cave, you also visits on this route Maseno "Oseni tree" (the origin of economic, educational and social development.). The area extends to cover Usege beach at the lake shore and then pushes on to Osieko Village.

The circuit includes some of the most captivating sights in Kenya as well as the landscape ranges from tropical forest, the savannah to arid and semi-desert. The circuit broadly comprises, Nyanza and Western Provinces and large part of Rift Valley. Kakamega forests, Mt Elgon, Saiwo Swamp, South Turkana, Kerio Valley and Lake Bogoria.



**WEEPING STONE OF MARAGOLI**

## TAKAWIRI ISLAND

A Lake resort where tropical delights and acute bounty meet. Takawiri Island is one of the most beautiful and unspoilt Island on Lake Victoria. Not only is the Lake the source of River Nile, but it is also the second largest fresh water lake in the world, making it the fishermen's idea of pure heaven. While sandy beaches stretch into unspoilt natural landscape, a heaven for hippos, otters and a vast array of birdlife.

Snorkeling, swimming, windsurfing or sailing, will satisfy the super active, and for more relaxed there is a beach bars, a chance to visit the fascinating archeological site of Dr. Mary Leakey or just leisurely tour of the neighboring Islands.

A paradise Island way from it all, the luxury chalestyle accommodation offers comfort and privacy of for selected clientele. All rooms have solar powered hot water in private bathrooms.

Large 'bands' house the recreation area, bar and restaurant where sumptuous meals are served with breathtaking Lake View. Facing west, you can enjoy you tropical sundowner with magnificent view of pink and gold tins of a Lake Victoria sunset as fish eagles and Egyptians geese fly home to roost

Drive to Kisumu and then take Takawiri's own luxury cruiser to the Island or fly direct to Mfangano. A special excitement fills the air. It's an experiencing you will not forget.

## NATURE'S WONDERLAND

### MT. ELGON & KERIO VALLEY RESERVE & SAIWA NATIONAL PARK

Mount Elgon lies at an altitude of about 2,500 m - 4,200 m and is about four hundred and seventy kilometers from Nairobi. Mount Elgon National Park is one of the most beautiful truly wild and intact sanctuaries game viewing is Excellent. The park provides a home to over four hundred elephants as well as Buffaloes, protected Colobus and blue monkeys, giant forest hog and other types of antelopes. Over two hundred and forty species of birds have been recorded there. There are four fascinating and explorable caves which are popular meeting places for elephants." This is where you can see elephants that have been dubbed "underground elephants". There is a lodge, two hotels, three campsites as well as a picnic site. Kerio Valley is another interesting place to visit on this circuit as it is a biodiversity area. Its depth of about 1,229 is truly awe striking.

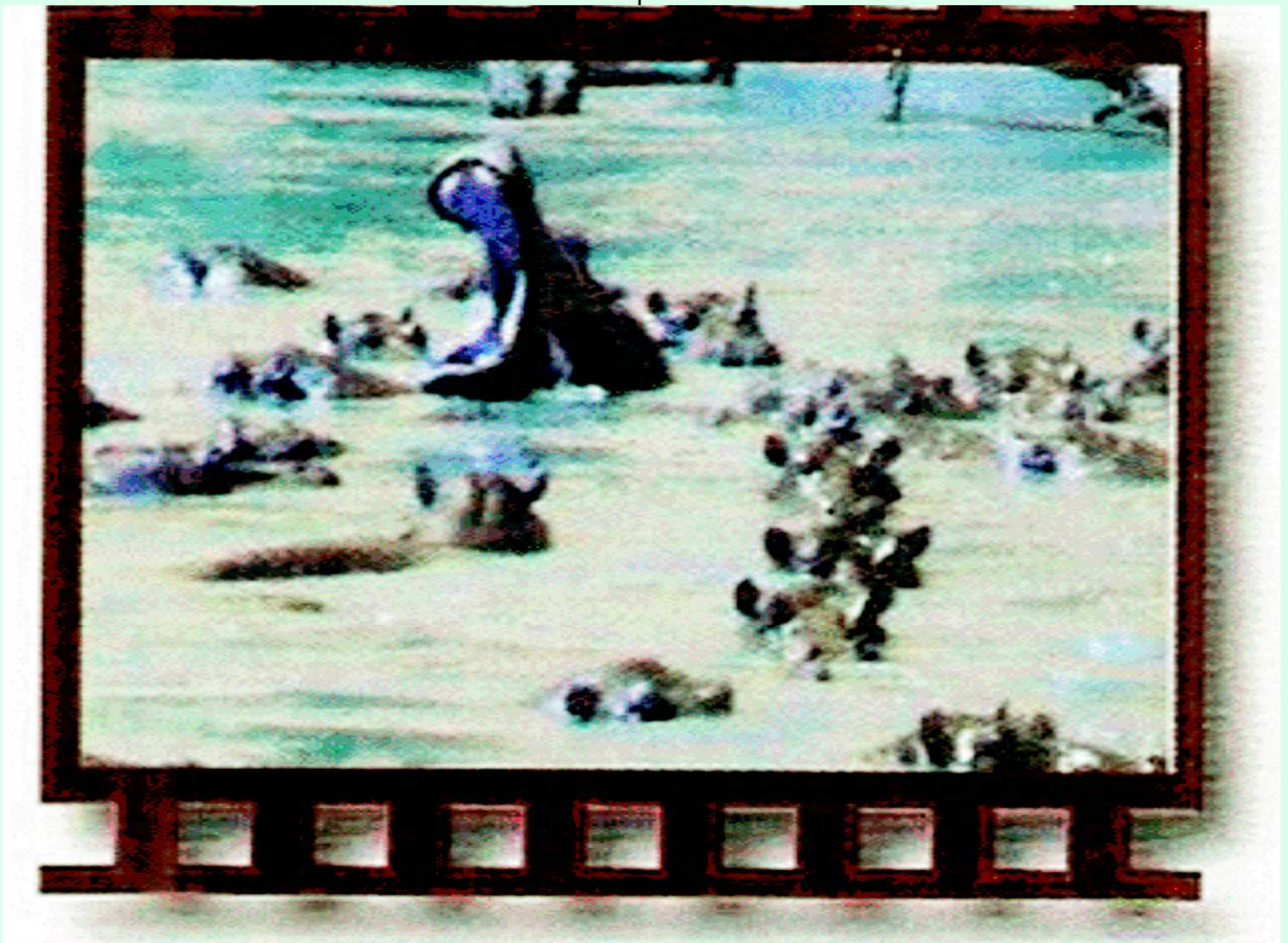
Saiwa Swamp National park was opened to provide a home to the rare se-aquatics sitatunga antelope.

### DREAMCAMP MAASAI MARA.

A safari adventure you'll never forget. Have you dreamt of encountering Africa at its most exciting, its most beautiful and its most exotic? The endless rolling Savannah, the spectacular wildlife and the rich nomad cultures? If so you should consider paying a visit to DREAMCAMP MAASAI MARA.

WRITTEN IN 2003

To be continued in the next issue  
In December.



# ADVERTISEMENT



## KISUMU POLYTECHNIC

P.O. BOX 143, Tel: 057-2020071, KISUMU  
FULL TIME COURSE.



### 1.0 DIPLOMA TECHNICAL COURSES FOR JANUARY ADMISSION ( 9 TRERMS WITH ATTACHMENT).

Code		Minimum Requirement
<b>1.1</b>	Electrical Engineering (Power option).	K.C.S.E. Mean Grade of C- (Minus). ( c ) Maths. ( c ) English, Physical Sciences/ Physics on a relevant craft certificate course or a 2 <sup>nd</sup> Division pass with credit in above subjects
<b>1.2</b>	Electronic Engineering.	
<b>1.3</b>	Mechanical Engineering (Plant option).	
<b>1.4</b>	Mechanical Engineering (Production).	
<b>1.5</b>	Automotive Engineering.	
<b>1.6</b>	Analytical Chemistry	K.C.S.E Mean Grade C- (Minus) with (c) in Maths, English and chemistry.
<b>1.7</b>	Applied Statistics	K.C.S.E Mean Grade of C- (Minus). With ( c ) in English, Maths ( c ) Biology, Home science or a relevant craft certificate course or a 2 <sup>nd</sup> Division pass with credits in above subjects.
<b>1.8.1</b>	Food and beverage management	K.C.S.E Mean Grade of C- (Minus) With C (Plain) in English, Maths Physical Sciences or a relevant craft certificate course or a 2 <sup>nd</sup> Division pass with credit in above subjects.
<b>1.8.2</b>	Dip. In Dietetics Management	K.C.S.E Mean Grade of C-(Minus) with C (Plain) in Maths, English, Biology, Chemistry, Phy/Science OR a relevant Craft certificate course or a 2 <sup>nd</sup> Division with credit in above subjects.
<b>1.9</b>	Building Construction	K.C.S.E Mean Grade of C- (Minus ) with (D+) in Maths and English.
<b>1.10</b>	Quantity Surveying	
<b>1.11</b>	Computer Studies	
<b>1.12</b>	Civil Engineering	
<b>1.13</b>	Applied Biology	Dip. Information Technology Module I.
<b>1.14.1</b>	Diploma in Information Technology Module I (Duration 2 terms)	Dip Information Technology Module II.
<b>1.14.2</b>	Diploma in Information Technology Module II	K.C.S.E Mean grade of C- (Minus)
<b>1.14.3</b>	Diploma in information Technology Module III	KNEC Craft certificate in social work or Community Development Module I
<b>1.15.1</b>	Diploma in Social Work and community Development module II	Dip. Information Technology Module I
<b>1.15.2</b>	Diploma in Social work and community Development Module II.	K.C.S.E Mean Grade of C- (Minus).
<b>1.15.3</b>	Diploma in Social work and Community Development Module III.	KNEC Craft Certificate in Social Work or Community Development Module I
		Community development Module II

# ADVERTISEMENT

## 2.0 DIPLOMA BUSSINESS COURSES- ( TERMS WITH ATTACHMENT)

Code	Course Title	Minimum Requirement
2.2	Accountancy	K.C.S.E Mean Grade of C- (Minus). ( C ) in English, Maths, any of accounting , Commerce or economics, Business Studies ( C ) in English Maths , any of Accounting, Commerce or Economics, Business studies OR a relevant Craft Certificate OR a 2 <sup>nd</sup> Division with credits in Maths and English.
2.3	Business Administration	
2.4	Banking and Financial Services	
2.6	Marketing	K.C.S.E Mean Grade of C- (Minus). ( C ) in English, Maths, any of accounting , Commerce or economics, Business Studies ( C ) in English Maths , any of Accounting, Commerce or Economics, Business studies OR a relevant Craft Certificate OR a 2 <sup>nd</sup> Division with credits in Maths and English.
		K.C.S.E Mean Grade of C- (Minus). ( C ) in English, Maths, any of Accounting, Commerce or Economics or Business Studies ( C- ) in English. Maths, any of Accounting, Commerce or Economics, Business studies OR relevant Craft Certificate of KNEC.
2.10		Diploma in Human Resource Management Module I
2.11		Diploma in Human Resource Management Module II

## 3.0 CRAFT TERMINAL COURSES FOR MAY ADMISSION (7 TERMS WITH ATTACHMENT)

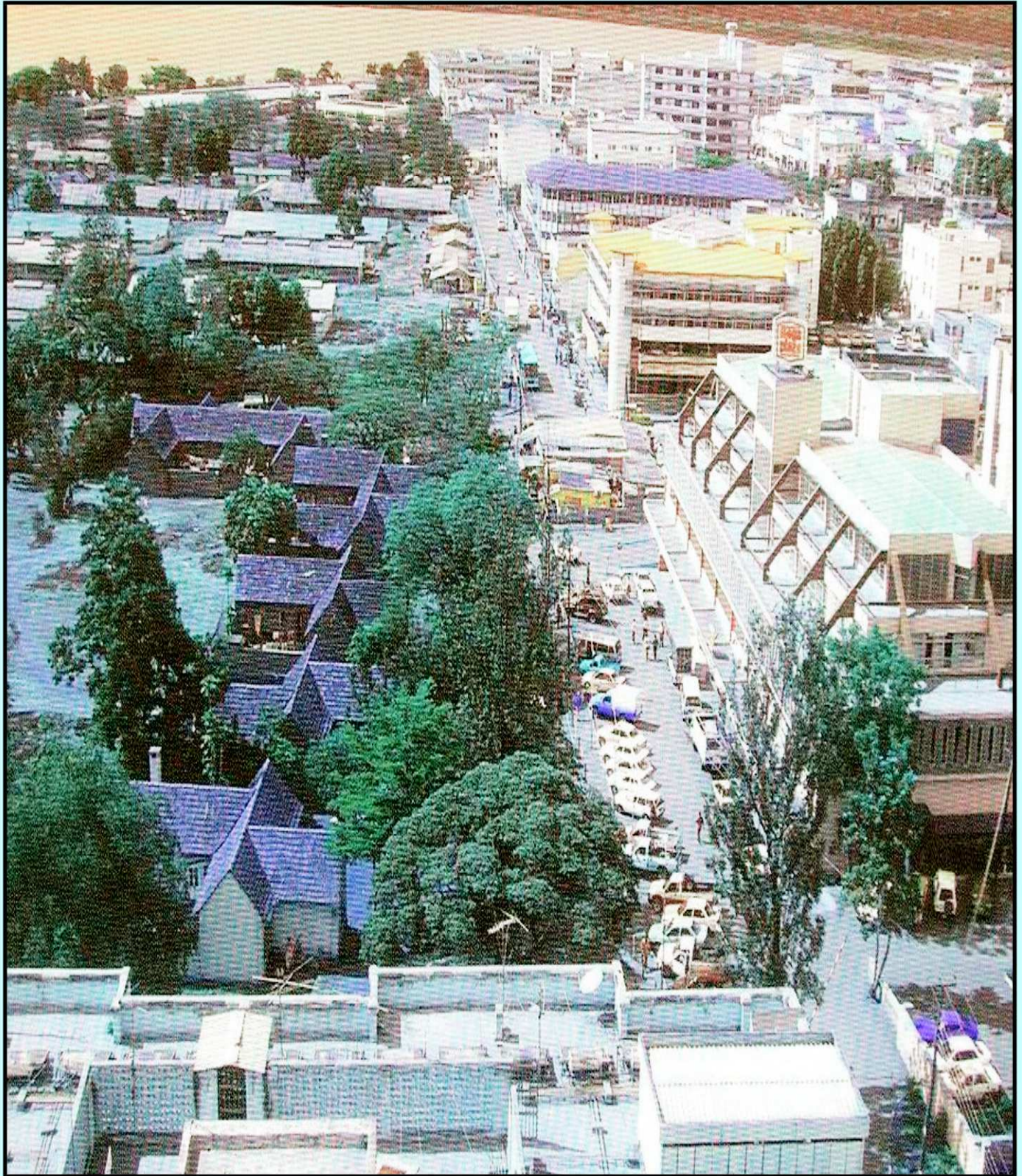
3.1	Electrical Installation	KCSE Mean Grade of D+ (Plus) (D+) English, MATHS, Pysics/Physical Science or a OR A 3 <sup>rd</sup> Division at "O" OR a relevant certificate.
3.2	Electronics	
3.3	Mechanical Engineering (Pro).	
3.4	Motor Vehicle MECH.	
3.5	Science Laboratory Technology	
3		
		K.C.S.E Mean Grade of D+ (D+ ) English, Maths, Phy/Phy.Sci., Chem, Bio, Homa, Home Sci, will an added advantage.
		K.C.S.E Mean Grade of D+ (Plus).

## 7.0 CRAFT BUSINESS COURSES FOR MAY ADMISSION (7 TERMS WIATH ATTCAHMENT)

Code	Course	Minimum Requirement
4.4	Secretariat Studies (Single and Group).	KCSE Mean Grade D+ (Plus ).
8.29	Craft Certificate in Human Resource Management.	K.C.S.E Grade of D+ (Plus).
8.32	Craft Certificate in Business Administration.	K.C.S.E mean Grade of D+ (Plus).



# AERIAL VIEW OF KISUMU



## **Western Kenya Becomes a Tourist Mecca.**

**By: Department of Tourism.**

The Kisumu Tourist Office was established in September, 2006 with the mandate of overseeing tourism related activities both in Nyanza and Western Provinces. Since its inception a lot has been achieved as regards regulation of tourism enterprises, product development, product diversification, marketing and promotion.

Tourism in the western circuit is slowly becoming a money spinner more than it has been expected. This can be attributed to the concerted efforts by the Ministry of Tourism and all the tourism stakeholders from this region to develop and market the regions diverse attractions both locally and internationally.

The tourism potential in this region is tremendous with plenty of scenic beauty, legends, traditions and cultures which cut across the entire region. The region also is the home to the world's largest tropical fresh water lake namely Lake Victoria which in turn is the source of River Nile. The Nile perch fish which measures about 5ft and other 300 rare species of fishes belonging to the haplochromine cichlids are found in this Lake.

There are also other unique attractions in this region such as Rusinga Island, Mfangano Island, Sindo Bay Sanctuary, Thim Lich Ohinga National Museum, Beautiful Muhuru-Bay and Karungu Beach, Pre Historic Sites, Tom Mboya and Jaramogi Oginga Odinga Memorial Mausoleums, Ruma National Park, Ugwa Bay Ruins, Huma Hills Hot Springs, Kisii Soapstone Mines at Tabaka Manga Ridge in Kisii, Lake Simbi (Simbi Nyaima) Flamingo Sanctuary, Oyugis Bird Sanctuary, Odino Falls in Sondu Miriu River, Sondu/Miriu Delta for Hippos, Sanctuary and Crocodiles, Ahero Rice Fields, Ahero herony Birds Sanctuary, Luanda Magere (The Rock Tomb of Kano Hero), Kolwa, Birds Sanctuary, Kisumu Museum, Kisumu Impala park, Kisumu Railway Old pier, Kit Mikayi (Legendary Rock of the First Wife) Ndere Island, Kogelo Village, Mageta Island Ruins, Yala River Delta and Usenge Birds Areas, Got Ramogi, Sugarbelt of Chemelil and Muhoroni, Abagusii Cultural Centre Kakamega Forest and Kakamega National Park, Bull fighting, Crying stone of Eshieywe, Lubao market famous for dog selling, River Nzoia Falls (Webuye Falls) Mumias Sugar plantation, Nandi Hills Ridge, Mt Elgon National Park (Elephant Caves in Mt Elgon), Malaba Bird Sanctuary, Trout fishing on Kimilili river and Kimilili forest.

Lake Victoria which is locally known as Nam Lolwe is in fact this region's nucleus within whose perimeter lies over 50 tourist attraction locations of great interest to the tourists. In addition, the President of the United States of America has his roots on the shores of Lake Victoria at Kogelo Village. This fact has added flavour to the tourism development in this region. Obama senior hails from this region which was previously unknown to the outside world. Currently thousands of Americans, Europeans, Asians, Arabs, Japanese and even Chinese tourists have become curious to know about this little African Village from where the first ever African-American President of the United States has his roots. There are over 150 visitors flocking to this village daily and increasing to over 500 over the weekends. In view of this, many opportunities have been opened which can be exploited. In addition, there are plans to open an "Obama route" that would start from Nairobi through the Great Rift Valley and Lake Victoria, leading to Kogelo. This is expected to boost tourism development in this region.

This region also has highly developed infrastructures such as Eldoret International airport, Kisumu Airport which is being considered for upgrading to international status and airstrips in smaller towns. Roads network, railway system from Mombasa through Nairobi to Kisumu where there is a pier for boats and steamer service are well developed. There are also adequate and reliable tour operation services, good eating facilities that offer continental, Chinese, Indian and African cuisine, good and ample accommodation facilities and good security at all times.

Finally we as a Ministry, we will continue giving guidelines on policy issues regarding tourism development in the region and assistance to all stakeholders engaged in tourism related activities to enable them conduct their businesses in a conducive environment to earn this country more revenue, create employment opportunities both direct and indirect among other benefits. We will also offer technical advice to all wishing investors in the industry.

## HOTEL AND RESTAURANT LICENCES (H.R.A CAP 494)

For the purpose of licensing, hotels are divided into categories and according to their size, bed capacity and extent of services they provide. License fee for hotels vary from Kshs 5, 000/= to Kshs 75,000/= depending on the factors indicated above.

On the grant of a restaurant licence, the applicant shall pay fees based on the previous years gross receipts or in the case of a restaurant which has not previously traded, a minimum license fee of Kshs 7,500 as follows:-

<b>Gross Receipts:</b>	<b>Fees</b>
· Annual gross receipts less than Kshs. 3,000,000	7,500.
· Over Kshs. 3,000, 000 but not more than Kshs 4,000,000	10,000.
· Over Kshs 4,000,000 but not more than Kshs 4, 500,000	15,000.
· Over Kshs 4,500,000 but not more than Kshs. 5,000,000	20,000
· Over Kshs 5,000,000 but not more than Kshs. 5,500,000	25,000
· Over Kshs 5,500,000 but not more than Kshs. 6,000,000	30,000
· Over Kshs. 6,000,000.	45,000

Requirements for hotels and restaurant applications are as follows:-

### NEW HOTELS APPLICATIONS

1. Certificate of incorporation/Pin No. in special cases.
2. Health certificates.
3. Copy of tariffs
4. Lease agreement
5. Copies of manager's professional qualifications and testimonials/CV.
6. Work permit for foreigner.
7. Relevant licence fee
8. Forms requirement HRA 1/HRA 2 dully filled.

### NEW RESTAURANT APPLICATIONS

1. Certificates of incorporation/certificate of registration.
2. Copy of menu.
3. Lease Agreement.
4. Work permit if foreigner.
5. Form HRA 1 duly filled.
6. Health certificate for the premises.

### RENEWAL

1. Health certificate.
2. Copy of menu/tariff.
3. Application form HRA 1, HRA 2 duly filled.
4. Valid work permits where applicable.
5. Relevant licence fee.

### TOUR OPERATORS LICENCE (T.I.L.A CAP 381).

<b>Services Rendered</b>	<b>- Customer Obligations</b>	<b>User Charges</b>
Issuance of tour operators Licence Class A (1) in tour business.	-Copy of insurance cover, PSV and inspection report of vehicle (s) used	Kshs 10,000 License fees
-Proof of legal possession of tour vehicle (s)		

## ADVERTISEMENT

<p>Motor Vehicle Hire-Class A(2) -Certificate of professionalism in tour guiding.</p>	<p>-Proof of legal possession of vehicle (s) -Certificate of good conduct of driver/owner</p>	<p>Kshs 10,000</p>
<p>Water Sport /Boat Excursion Class A (5) &amp; (7) -Coxswain certificate. -Certificate of registration of company (for new applicants).</p>	<p>-Insurance cover. -Inspection report from Fisheries Department -Certificate of seaworthiness for the boat (s)</p>	<p>Kshs 8,000</p>
<p>Local Tradition Boat Operational Class C (2)</p>	<p>- As per Water Sports/Bots excursion Class (5) &amp; (7) requirement (above)</p>	<p>Kshs 2,000</p>
<p>Nature Parks &amp; Amusement Parks -Trade license -Certificate of registration of company (For new applicants)</p>	<p>- copy of lease agreement/title deed of premises -Work entry permit for non Kenyans</p>	
<p>Private Zoos Class C (6)</p>	<p>- As per Nature Parks &amp; amusement parks (above).</p>	<p>Kshs 2,000</p>
<p>Citizens Tour leaders. Driver Guides c (8) &amp; foreign guides B (8)</p>	<p>-Certificate of good conduct of driver/owner -Certificate of professionalism I tour guiding &amp; foreign Guides B (8)</p>	<p>Kshs. 2000</p>

### CLASSIFICATION OF TOURISTS ESTABLISHMENT

<p>Classification of Hotels &amp; Restaurant</p>	<p>-Letter of application</p>	<p>Kshs. 43,000</p>
--	-------------------------------	---------------------

N/B: For any tourism enquiries in Nyanza and Western Provinces please contact the following.

MINISTRY OF TOURISM  
KISUMU TOURISM OFFICE  
P.O BOX 55-40123  
TEL: 0200-2033865  
FAX: 057-2500168  
KISUMU-MEGA CITY

## SCIENCE PARKS

### INCUBATING TOURISM THROUGH SCIENCE PARKS IN KENYA.

by Robert Jallan'go Akello, PhD.  
Masinde Muliro University

It is our intention to incubate tourism in Western Kenya through the first in its own, Masinde Muliro Science and Technology Park, linking with Government, that industry, and academia.

A lot of people in the world want to visit sites documented through the INTERNET. Our role is to be online, through research such as those one sees in Europe and The Americas. The Optical Fibre Backbone Network, an ICT Concern, will assist us do this.

Thailand has a Software's Paradise, Egypt has Pyramids, the Middle East has initiatives. Western Kenya has Nature, the key word. China, and indeed the Asiatic Countries have a unified culture. The is why we think of visiting one Zhejiang University National Science Park (ZUNSP), West Lake in Hangzhou, a national renowned tourist and historical city. It is a backbones for the technology innovation and incubation of Tourism in China.



Judy Miriga and Ambassador Carson

### US Official Sheds Light on Possible Upcoming Obama Africa Policy

By James Butty  
24 June 2009

The new U.S. Assistant Secretary of State for African Affairs said the Obama administration plans to invest substantial amounts of money over the coming years in agricultural development to promote food security in Africa.

Ambassador Johnnie Carson spoke Monday in Washington to a constituency of Africa advocacy groups.

He outlined what is likely to be the Obama administration's Africa policies for the next four years.

Carson told the African American Unity Caucus that over the next four years the Obama administration will focus on four key issues as part of its Africa policy.

These, he said, include promoting and strengthening democratic institutions and the rule of law, preventing and resolving conflicts, encouraging sustained growth and working with African countries to address what he called the new and old global challenges.

Ambassador Carson praised Africa for the progress the continent has made over the last 15 years in strengthening democratic institutions. He referenced recent successful elections in Ghana, South Africa and Malawi.

Singapore Science Park has established partnerships with overseas science parks and incubation for its tourist attractions. Through its incubation Programme, IBI supports international firms expanding into The Cambridge Science Park, not to mention the Tundra's development through the efforts of the Finnish TEKEL's subsidiaries, starting from Oulu's "Nokia".

What about if we researched on The Equator at Maseno and came further North to see the Kakamega Forest, sleep at Rondo? The effects of the Electrical Fields at the Rondo are colossal! Would we see the History of Discovery and Education and their migration into Uganda and Kenya? The Equator Then we go further North to visit the Caves of Mount Elgon. Would we learn to be discoverers, like the perso who called it "Elgon".

Social Scientists, Engineers, Politicians, Children, and all make Tourism because I, in my wish, would like to watch Esukuti, play Nyatiti, go to Rosterman, Ikolomani, and LEARN the history of Education - CMS, Friends, Investments, and others - to bring everybody on-board to The School of Culture, Sports, Music and Dancing.

## DIASPORA NEWS

But he said challenges still remain as evident by recent electoral problems in Zimbabwe and Kenya. He said Washington will do all it can to help strengthen democratic institutions.

"We constantly have to encourage those in civil society to be the voice and conscience of their countries, and we have to promote constitutional democratic governments, strong court systems, strong legislatures, regular elections, free media, and religious tolerance," he said.

Carson praised the African Union for the role it played in resolving the conflicts in Liberia, Sierra Leone and Angola.

He said challenges also remain as evident by the continued conflicts in Somalia, eastern Congo, and Sudan.

"We have to do as much as we possibly can to help resolve those conflicts," Carson said.

Carson said President Obama has taken a keen interest in resolving the conflict by his appointment of General Scott Gration as special envoy on Sudan.

He said the Obama administration plans to focus on food security and agricultural development in Africa.

"The administration plans over a number of years to put a substantial amount of money into agricultural development to do two things. One is to lift people out of poverty and the other one is to help grow...agriculture," Carson said.

On what he called the new and old global challenges, Ambassador Carson said the Obama administration plans to work with African countries to address the issues of climate change and illicit drug trafficking

Carson said President Obama will elaborate on some of these topics when the president visits Ghana on July this year, the earliest visit to Africa by a sitting American president.

## WESTERN KENYA UNTAPPED TOURISM JEWEL

**By:**  
**Obat Masira and Omar Nasser.**

Western Kenya is fast opening up to the world of Tourism. An established tourism circuit offers tremendous scope to the international tourist and the domestic tourist alike, to learn observe and experience the diverse cultures and rich and rare fauna and flora. And in spectacular milieus, eco-tourism offers unusual panorama in relaxed setting that are more than therapeutic and also leaves one in awe.

Western Kenya untapped tourist jewel is an open window to everybody-local families and entrepreneurs, farmers, school children college and universities and of course the international tourist. And the wonders are unlimited-historical sites, village museums, museums of famous person, rock art, cultural heritage, shrines and the local people in their diversity by rich flora and fauna.

Human activity too is unlimited, as one traverses the vast plain, valley and coombs; the geography, topography and the diverse terrains through vast sugar and tea plantations, rumbling hills, crossing major rivers full of aquatic life and then taking a spectacular motor boat ride on the world largest fresh water tropical lake hosting little famous islands abounding in fish (Nile perch) and fishing trips are arranged. Along the shores there is the occasional glimpse of heads of hippopotamus and Mfangano Island can be found the giant Nile alligators and huge arrays of birds perched on fig trees.

Choices are many, it could be Ruma National Park where game reviewing is major and the pick-nick sites; it could be mount Elgon and the elephant cave; it could be the Kakamega National Reserve the only remnant in Kenya of once great tropical rainforest that stretched across Central Africa. As a relic of this Africa equatorial jungle is now famous around the world for being home of several species of birds. As far as bird conservation is concerned it is one of the important Birds Area (IBA in Kenya with a prolific record of over 330 species. Turners's Eremomela, Blue-headed Bee-eater, Aworgen's greenbul birds are found only in Kakamega Forest neighboring South Nandi Forest in the whole of East Africa. Other birds to be found only in this near by forest Western Kenya include Black-billed wattle-eye, southern Hyliota, African Shrike-Flycatcher, white-tailed ant-thrush, petites cuckoo-shrike and cassins honeyguide.

Among the mammals known to live in the forest are the Bush pig Duikers, Bushback, clawless otter, mongoose, Giant water shrew, squirrels, Tree pangolin. Porcupine, Bats and primates. Among the primates to be found here are the Black and white colobus monkeys, De Barazza's monkeys, the red-tailed, the potto and olive Baboons.

Twenty seven species live in the forest. And true to the forest continental origins, the snakes of Kakamega are mainly from West Africa. They include the forest cobra, the black-lipped cora, Jameson's Mamba, the Bush viper, the rhinoceros-horned viper, the cobra viper and the gold cobra.

The most common terrestrial lizard one is like to come across is Jackson Lacerta. Others lizards are Agame, Peters long tailed skink and the Nile monitor among other lizards. Other interesting animals



**KIT MIKAYI ROCK**

are amphibians, mollusks, butterflies and other insects.

For a superb view of the forest to the Nandi Hills a short climb up Buyangu Hills well is well worthwhile. It's easily accessible and worth a visit. Other interesting spots include Lihandra Hills Isiuku water falls within reached provides pleasant spot for picnic

At Kakamega Forest, there are other activities options such as forest walking and linking: Birds watching; primate watching and butterfly watching.

Regarding where to stay there are Kenya Wildlife Society (KWS) self-catering facilities udo Bandas, Isukuti Guest House and camping which is more adventurous.

In Mbita in South Nyanza, one could find both sun, sand and fun at the Lake Victoria safari village with quite and nice surrounding just of Rusinga and Mfangano islands.

## UN TAPPED TOURISM JEWEL

The village consists of attractive round traditional hats and is also having a lighthouse on the lake shore with honeymoon suite. All rooms have its own bathroom and private verandah overlooking the lake. It is just the most perfect place for any tourist to sniff the soothing breeze while gazing out on the lake and the islands beyond.

The people are hospitable and are unspoiled by modern tourism. One can go to the village to relax or use it as a base to explore the various attractions of the area and for ecotourism activities.

One could undertake fishing for Nile perch (Mbuta), bird watching and there are more than 160 species of birds observed, sight seeing trips by road to the near by Ruma National Park where Roan antelopes and blue swallows abound in plenty for curious eyes; there is also the Lake safaris to visit colorful Luo fishing beaches.

The Western Kenya tourist circuit offers a great deal to the ideal tourist, because every little single activity has just that appealing to artistic touch,; there is poetry everywhere; in the caves with rock earts; in the peoples song and dances; in their conversation and artifacts peculiar to a region; the sky and the land to bear their mysteries.

## ADVERTISEMENT

# THE AFRO LEGACY HERITAGE ENTERPRISE

**The cradle of civilization heritage in the Nile Basin**

## A MOVEMENT

PROMOTING TOURISM, HERITAGE, CULTURES AND ENTERPRISE DEVELOPMENT IN THE NILE BASIN.

CO-FOUNDED BY KENYANS LIVING IN THE DIASPORA (USA)

WE ARE PARTNERS OF THE CONFEDERATION COUNCIL FOUNDATION FOR AFRICA INC (USA). WE ARE COORDINATING THE WESTERN KENYAN ARTISTS TO PERFORM IN USA IN 2010 IN SUMMER.

FIRST BENEFICIARIES OF THE TOUR ARE OSOGO WINYO, JACKIE AKINYI, ATOMY SIFA AND MISANGO ARTS ENSEMBLE.

THE EXECUTIVE DIRECTOR  
AFRO-LEGACY HERITAGE ENTERPRISE  
(KISUMU KENYA)  
EMAIL: [afrolegacyheritage@gmail.com](mailto:afrolegacyheritage@gmail.com)

## **Sport Fishing as a Tourist Promotion in Western Kenya**

**By:-**

**Jacob Odhiambo Odipo.  
Retired Fishery Officer**

The fishing Industry in Lake Victoria remains the major economic mainstay not only in Western Kenya but produces almost 90% of the total fish production nationally.

However, the Lake has other untapped economic potential which include water transport both for passengers and cargo, Sport fishing and other water sports. Investing in water transport would serve the dual purpose of promoting both passenger and cargo traffic and water sports such as water skiing, wind surfing and fishing for leisure known as sport fishing.

An ambitious investment in the area of both passenger and cargo transport would not only ease pressure on local and regional road transport but would at the same time provide a cheaper transport option.

The only challenge here has been the long absence of legislation to regulate water transport that should include the issuance of licenses for coxswains that obtains to vehicle drivers on the roads. This should include testing on safety measures and basic coastal navigation to ensure the safety of seafarers.

The fact that Lake Victoria is a large water body the second largest fresh water lake in the world shared by Kenya, Uganda and Tanzania therefore provides a major natural resource with diverse investment opportunities with remarkable economic potential such in the shoreline within the region.

### **Sport Fishing:**

While fishing Industry in the Lake Victoria has evolved over the years from subsistence to commercial fishing, making it the economic mainstay in Western Kenya, the development of sport fishing would go a long way in enhancing further the economic benefits derived from the Lake ecosystem and its diverse biodiversity.

The presence of numerous Islands in the Lake, also provide ideal countryside tourist outposts that would promote fishing as a sport to both local and foreign tourists.

Nile perch fishing being an offshore fishery, coupled with its ability to grow to body size as large as over 100 Kgs would be another attraction in the promotion of sport fishing. This is because fishing as a sport is completed on the basis of the size in Kgs of the catch

This sport in Lake Victoria has the potential of playing a pivotal role in developing the Western Kenya Tourist circuit which largely remains a proposal on paper.

Introduction of this sport in the Lake Victoria would attract major related investment especially in the Hotel Industry with several 5 star hotels lining the shoreline, with outpost subsidiaries in the Islands such as Mageta, which was a detention camp during the colonial regime Ndere, Rusinga, Mfangano, Ringiti, Rimba, Migingo, Ndeda, Oyamo e.t.c on the Kenya boarders.

Developing the Western Kenya tourist circuit would provide the visiting tourist a second destination in the fresh water shoreline besides the Costal region in the Indian Ocean.

Uganda being a land locked country, without a coastline has significantly developed its part of Lake Victoria shoreline including the 20 presidential suite Munyonyo Beach Hotel but has not gone the extra mile to incorporate sport fishing.

### **CONCLUSION**

The potential of developing water sports would therefore no doubt spurs economic development in the area of tourism Industry and this is the catalyst required to open up the Western Kenya Tourist Circuit that would link the water sports including sport fishing, water skiing , wind surfing in the Lake Victoria with the scenic wonder geographical attraction in the region that include Kit Mikayi and other rocky scenes within the environs, the Proposed Obama museum in Kogelo, Yala swamp, Ruma National Park, to view rare world life, Lake Kanyaboli and Kakamega forest.

This would spur subsidiary supporting Industries like tour operators investing, in fleets of both road, and water transport with air backups, 5 star hotels with requisite bed capacity to accommodate the potential tourists. The overall impacts of development in the areas highlighted have the potential to significantly improve the national economy by creating several thousands of employment opportunities and subsidiary investment.



## RUSINGA BEACH



## ADVERTISEMENT

### CONFEDERATION COUNCIL, FOUNDATION FOR AFRICA INC USA

**MS JUDY MIRIGA, DIRECTOR, CONFEDERTION COUNCIL FOUNDATIOIN FOR AFRICA INC USA**

#### **SPOKESPERSON FOR THE DIASPORA.**

##### **Aim**

- To provide platform to open up doors for development towards emerging entrepreneurship agenda among new American immigrants
- To provide sustainable settlement towards self sufficiency.

##### **MISSION**

- To network for start business investment locally and abroad.
- To involve simple economic and educational networking and empowerment partnering with Federal Government, the Civil Society, Faith based and non profit project under one stop-service plan.

##### **PURPOSE.**

- To encourage more women and youths who are the engine of change towards achievement sustainable policy enactment and socio-economic demands in order to curtail growing influx of African migration which will eventually reduce unwarranted relocation and suffering of many people

##### **MY VISION**

- The Foundation under my leadership intend to fulfill immigration settlement program and the millennium development goals and strategic plan of action”

**·MS JUDY MRIGA, SPOKESPERSON FOR THE DIASPORA**

## THE ROLE OF MUSIC IN THE DEVELOPMENT OF WESTERN KENYA REGION

BY PROF: CHARLES NYAKITI  
KENYATTA UNIVERSITY

### Introduction

The discussion on the role of music in the region here refers to the functions or uses of music. As for the region, I am not sure whether our discussion should cover Africa; observe that music like language is a universal human phenomenon, which operates at both the biological and cultural levels. Biologically, a normal human baby is born with ability to make music, but the music that the baby makes when it grows up into an adult, is determined by the culture in which it is born and bred. The use of 'vocal cords' to produce 'song' and the body movements in space and time to produce 'dance' are the core original activities of music. Although research has revealed that their no society in the world without phenomenon, most if not all, have never agreed on what is or is not music. At the same time, most of the world societies do not have the equivalent of the word 'music' in their vocabularies. This has prompted editors of music dictionaries and encyclopedias and music scholars in general to avoid defining the word in their publication, unless the work refers to a specific music culture.

### Music Region

In our discussion, we shall define music religion in terms of socio-cultural instead of socio-political one. But such discussions are bound to be problematic. This is because the overbidding socio-political conditions that led to the creations of the regions by the colonist did not take into consideration the existing culture boundaries. We find, for example, that the boundaries of Kenya, Uganda and Tanzania (then Tanganyika) were drawn without considering the culture boundaries of the communities of the region. This resulted into cultural communities residing in more than one country. At the same time, the so formed, have so many cultural religions that is becomes almost impossible to think cultural regions but instead, cultural regions as the basis of discussion. In our discussion was to be based on East Africa Religion, then, we would discuss music culture of all the communities living in the region; If we decided to consider the lake region then, we would be talking about all the cultural grouping living around the lake, but if we were to consider Kenya as a cultural region, then, we would be talking about forty two cultural groupings in the country; we could as well be talking about Western Kenya Region as occasion suggest, then, we would be talking about the music cultures of the communities found in the region.

In whatever culture, the inhabitants have always created and used music for various purposes. Different genres have been composed and performed under labels such as traditional contemporary and others. Originally, the rituals genres were participatory and functional with the purpose per see. Of late, some of them are performed out of context hence they lost the purpose for which they were created.

### Change of Song-dance Scenery.

Since the coming of foreigners into this region, the song-dance scenery has greatly changed. The change was hastened by the invention, development and acquisition of new technologies. Song-dance styles and instruments of foreign were adopted and adapted by the talented natives resulting into new genres. These formed the contemporary song -dance traditions of the region. In Kenya, for example, the adaptation resulted into genres such as the Kikuyu Mwomboka, the Luo Kinanda, orutu, gita, the Luhya omotibo and the costal Taarab. Bands such as Lake Victoria band, Kindu Band and others came into being. Solo guitarists such as Olima Anditi, Otina Mariwa, Oyugi Tobi and George Mukabi displayed their talents. The invention and development of radios, television sets, gramophones, records, cassettes, and video player to name a few helped promote the new genres and musicians. Educational Institutions and musical festivals took the lead the curricula and musical activities respectively encouraged little of the song-dances of the community in the region. The former President (Daniel Arap Moi) instituted a Music Commission (PPMC), which has so far been headed by three chairmen. It is unfortunate that the commission has yet realized its goals as it has so far failed to address the objectives for which it was created. Despite PPMC's noble objectives, its second Chairman concentrated his efforts in vetting and marshalling choirs and dance troupes to perform for the then the head of state. The third chairman on the other hand, continued with what his predecessor did, but went further to invite choir leaders to practice hymns and other Christians songs and to some extents, a few patriotic songs to the head of state. He was more of a choir leader than a chairman of the PPMC. He resign to contest for a parliamentary seat. On the same note, the PPMC has yet to realize the objectives for which it was formed. It would note be too harsh to say that the three commissions chairman have not performed as well they should have. This means that some of the qualifications required for future appointments to the head of the Commission should include dedicated personalities; preferably music researcher scholars will love an d foresight for music of this region. This is because there is more to music than what meets the ears and the eyes.

### History of Music

Music, Mathematics and astronomy were the fist three core subjects any learned person was expected to have studied among the Greeks. This role, although not taken seriously at the surface level, is quite alive and strong in major activities of the societies residing in this region. In Kenya, for example, the best performing schools in National Examinations have music in their curricula. Blacking (1976: vii-vii) in his book "How Musical is Man?" wondered how it was that at has preparatory school most of the scholarship were won by choristers, who represented only a third of the school and missed more than a third of the classes

## TRIBUTE POEM

**WESTERN KENYA TOURIST ASSOCIATION  
(FOUNDED IN 1997)**

**FOUNDED BY DR. JGC AMOLLO,  
THE MAN WHO INITIATED THE FIRST TOURISM ASSOCIATION MOVEMENT IN  
WESTERN KENYA.**

**SPECIAL TRIBUTE TO THE FALLEN DOCTOR-  
THE LATE DR. JGC AMOLO WHO JOINED THE HEREAFTER ON 5<sup>TH</sup> .MAY. 2007.**

**DR. JGC'S SECOND ANNIVERSARY**

**POEM: FOND MEMORIES**

GOD IN HIS WISDOM  
CREATED YOU UNIQUELY. AN INDIVIDUAL DESIGN.  
IN SCHOOL, A SOCCER PLAYER  
MASENO OLD BOY  
IN LIFE, HUMANITY SAVER  
AND TOURISM SPECIALIST AND LOVER  
DR JGC AMOLLO,  
YOU WERE NOT JUST ANOTHER PERSON,  
NOT EVEN ANOTHER DOCTOR,  
OR EVEN ANOTHER TOURISM PROMOTER  
A MAN WITH GREAT QUALITIES  
DAKTARI, YOU WERE YOURSELF  
A RARE KIND OF A PERSON, SO SPECIAL, SO DEAR, SO KIND, SO INTELLIGENT  
AND YET SO SIMPLE  
YOU ARE IRREPLACEABLE  
TOURISM MOVEMENT IS NOT THE SAME WITHOUT YOU.  
YOU WERE THE TOURISM ENDOWMENT IN THE REGION  
DEATH HAS ROBBED US OF GREAT ASSET  
AS TOURISM DEVELOPMENT WEAVERS IN YOUR ABSENCE  
DR. JGC AMOLLO, FOUNDER OF WESTERN KENYA TOURIST ASSOCIATION  
YOUR ARTICLE "NATURE WONDERLAND STILL MEMORABLE,  
GIVING A PICTURE OF TOURISM POTENTIAL IN THE REGION  
YOUR ARTICLE WILL BE READ FAR AND WIDE, POSTHUMOUSLY,  
REST IN PEACE DR. JGC AMOLLO.  
OUR FOND MEMORIES OF DR. JGC  
FOR GOD CREATED YOU GREAT,  
TO STAND OUT AND ACTUALLY YOU DID  
FOR GOD NEVER CREATED YOU  
TO BEND IN AND YOU NEVER DID.  
MAY TOURISM BLOSSOM IN YOUR ABSENCE  
MAY THE ALMIGHTY REST YOUR SOUL IN ETERNAL PEACE?

# LAVIRECHA

**LAKE VICTORIA REGIONAL ENVIRONMENTAL CULTURAL AND HEALTH AID.**

FOUNDING PATRON, RT. REV BISHOP FRANCIS MWAYI ABIERO  
BISHOP DIOCESE OF MASENO SOUTH (A.C.K)

HELD THE FIRST LAKE VICTORIA INTERNATIONAL ARTS FESTIVAL IN KISUMU FEATURING  
ARTISTS FROM UGANDA, TANZANIA AND KENYA IN THE YEAR 2000.

**AIM**

CELEBRATING THE DIVERSITY OF CULTURES IN THE LAKE VICTORIA  
BASIN OF EAST AFRICA.

THROUGH VIBRANT AND PROFESSIONAL ARTS  
FOR MORE INFORMATION CONTACT  
LAVIRECHA: [lavirecha@yahoo.com](mailto:lavirecha@yahoo.com)



**SKY VIEW**

## SHORT STORY

### **THE COCKROACH BY Prof. Christopher J. Odhiambo (Moi Univesrity)**

He always picked the train at the same place. Like all of us. He then walked right to the front of the compartment. He never used to sit even if there was a seat. He could then stand throughout the journey. Neither did he ever used to speak to anyone. Never did anyone speak to him. We imagined that he never used to talk because he must have talked a lot when he was young and as such had nothing to say at all in his old age. I used to wonder whether he had a family.

I really wanted to know more about this mysterious man. So one day I decided to follow him. I wanted to know where he worked. I followed him the whole day. He just kept on walking. He never stopped even once. He crossed the roads as if he was not aware of any impending danger. Interestingly though, not once did a vehicle screech nor hoot at him. He seemed to be always at the right place at the right time. That day I never stopped to place him. Nor did I have time to do anything else.

In the evening we boarded the train as usual and he alighted at his usual place. That night I vowed to myself that I would do all I could to unfold the mystery behind this man. The next morning he was in the train as usual. However on this day he looked quite different. He had his head and chin clearly shaven. He was also replenished in a brand new white woolen suit. He was a sight to behold!

All the eyes turned onto him. But he took no notice. As usual, he walked to his regular standing position. It is then that I noticed some brown thing moving along his coat. It was a cockroach. [It moved and then settled on his shoulder. Seated next to where he was standing was a whiteman. The whiteman stood up and removed the cockroach from his coat. That was when a miracle occurred. Hell too broke loose. The dumb spoke. The man talked. The man wailed. The man screamed. [It was as if all these days he had not been talking, had been saving for this particular day. He vilified the whiteman. He quarreled him: "Return that cockroach exactly where it was." he shouted. "Look at you! Why can't you ever mind your own business? Why can't you whites ever let us have anything? He screamed now much louder. "Why must you always take everything from us, Whitemen? Can't I even be allowed to keep a cockroach? No, I won't let you take this away" Now, foam and froth were spewing freely from the sides of his mouth. He continued; "rest assured you will never take this cockroach away from me."

Then the train reached the town center station and we all alighted. That evening he was not there. The next day he was not there. I never saw him again. I wonder what happened to him and his cockroach

## ADVERTISEMENT

# ENVIRONMENTAL HEALTH NETWORK WOMEN'S COLLECTIVE ENTERPRISE

### **AIMS AND OBJECTIVES**

- TO INCULCATE AN UNDERSTANDING, APPRECIATION, PROTECTION AND UTILISATION OF THE NATURAL ENVIRONMENT AND THE HEALTH OF THE LAKE BASIN
- TO PROMOTE GIRL CHILD EDUCATION AND DEVELOPMENT THROUGH LIFE SKILLS, TRAINING & BURSARY SUPPORT.
- TO PROMOTE WOMEN CULTURAL EDUCATION EXCHANGE PROGRAMME
- PROMOTING WOMEN IN FILMING IN NYANZA PROVINCE IN KENYA
- PROMOTING CRAFT TRADE

### **CONTACT :**

Ms EUNICE ATIENO MITTO  
THE CO- ORDINATOR  
ENVIRONMENTAL HEALTH NETWORK  
P.O BOX 3599  
KISUMU, KENYA  
E-mail: [environmentalhealth@gmail.com](mailto:environmentalhealth@gmail.com)

# **MISANGO ARTS ENSEMBLE**

## **(THE TOTAL THEATRE IN KENYA)**

SEEKING TO PROMOTE SOCIAL TRANSFORMATION  
THROUGH STIMULATING, PROVOCATIVE,  
EDUCATIVE AND PARTICIPATORY DRAMA

### **REPERTOIRE**

CREATIVE DANCES, DRAMA, POETRY, NARRATIVES  
AND DEVELOPMENT THEATRE AND FILMS

### **OUR ORIGINAL DEVELOPMENT FILMS SCRIPTS**

**NO RETREAT**

**“MISANGO OKONYO LOLWE”**  
(SACRIFICE SAVES LAKE VICTORIA)

**TEARS OF MUD FISH**

*By*: Oloo Nyamwaya

*Seeking partners in their productions*

**DETAILS;**

**CONTACT**

THE DIRECTOR

MISANGO ARTS ENSEMBLE  
P.O BOX 6111 KISUMU, KENYA  
<http://misangoarts.blogspot.com>  
TEL: +254726164954  
E-mail: [obatmasira@yahoo.com](mailto:obatmasira@yahoo.com).



# **LAKE VICTORIA BASIN FILM MAKERS' GUILD (KENYA)**

## **1.NAME**

The Name of the community based organization **Lake Victoria Basin Film Makers' Guild (Kenya)** (in this constitution referred to as Umbrella body for music, film writers, editors, actors and directors' guild in western Kenya)

## **2.OBJECTIVES**

The objects of the organization are as follows

- a) To educate inform and entertain the public through quality scripts, productions and professional acting.
- b) To facilitate the training of stakeholders in the film industry and equip them with professional skills in the scripting and production of film.
- c) To act as patent and royalty agents for film makers in the region.
- d) To act as an arbitrator between the various stakeholders in the film industry within the region.
- e) To act as a link between the film makers from the region and both National and International film makers or relevant institutions.
- f) To be a channel for the promotion and marketing and distribution of films from the region.
- g) To identify preserve and promote filming sites within the region.

## **3.VISSION AND MISSION**

### **I) Vision**

To make the lake region a center of excellence in film making.

### **ii) Mission**

to produce competent professionals capable of producing films that match international standards.

**Contact Kisumu Area Library**



# SCENIC VIEW OF GEMBE HILLS



**The magic of Rusinga Island**